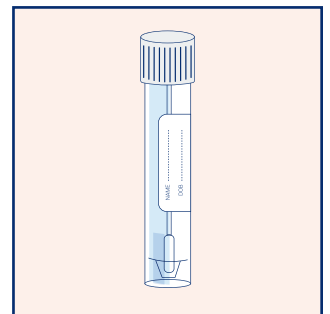
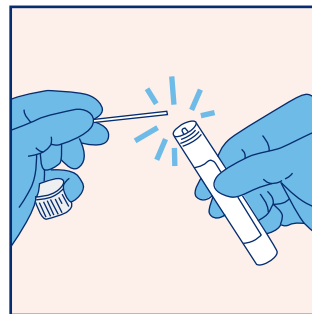
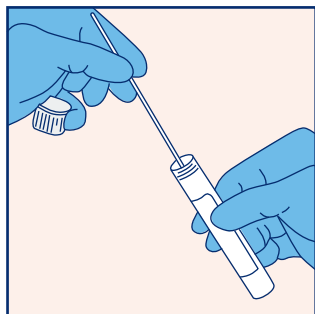
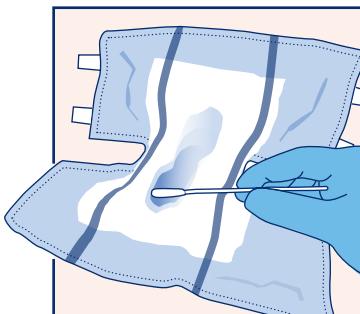


### Instructions for Collection a Swab Sample from a Brief for UTI PCR Testing

How collect a swab sample from a brief for UTI PCR testing.

#### Follow these steps:

- 1 PREPARE MATERIALS:** Gather a sterile swab (eSwab *White Cap*) and gloves.
- 2 FIND WET AREA IN BRIEF:** Locate the area of the brief with the highest concentration of urine.
- 3 SWAB COLLECTION:** Gently press the swab onto the wet area without touching the diaper's outer surface to avoid contamination.
- 4 TRANSFER TO TUBE:** Place the swab into the PCR media tube, ensuring the swab tip is submerged, and break off the excess swab.
- 5 SEAL:** Seal the tube tightly and place in the provided collection bag along with the completed requisition form.



#### SPECIMEN HANDLING REQUIREMENTS

##### Temperature & Duration:

Samples should be stored and transported at 2–8°C and must be tested within 5 days.

##### Transport Time:

Samples should be transported as quickly as possible to maintain quality.

##### Regulatory Compliance:

Transportation must follow local and national regulations for handling pathogenic materials.